

Mounting instruction with K20 OmegaV profile

free bond layer

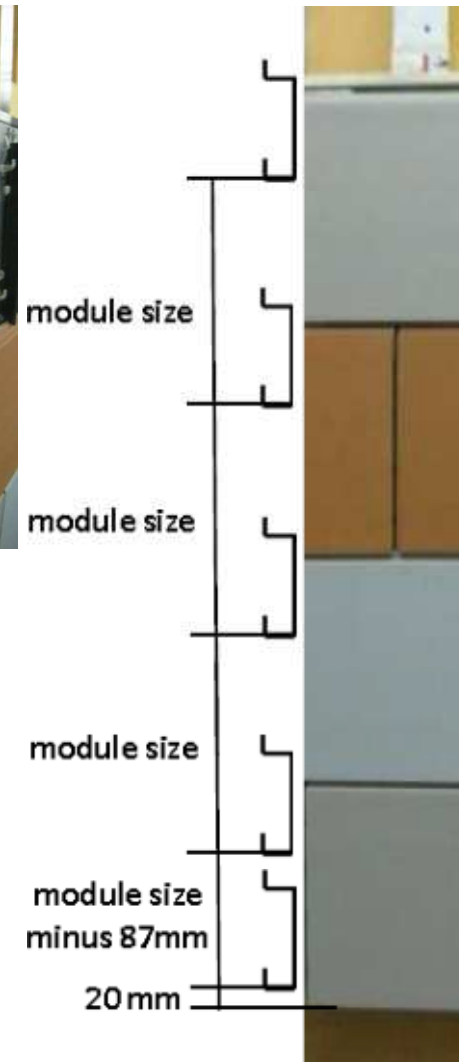
substruction

The installation of the basic substructure must be carried out according to project-specific, static calculation.

Follow the parameters from the Appoval Z-33.1-1175 or BBA Agrément Certificat 13-4980

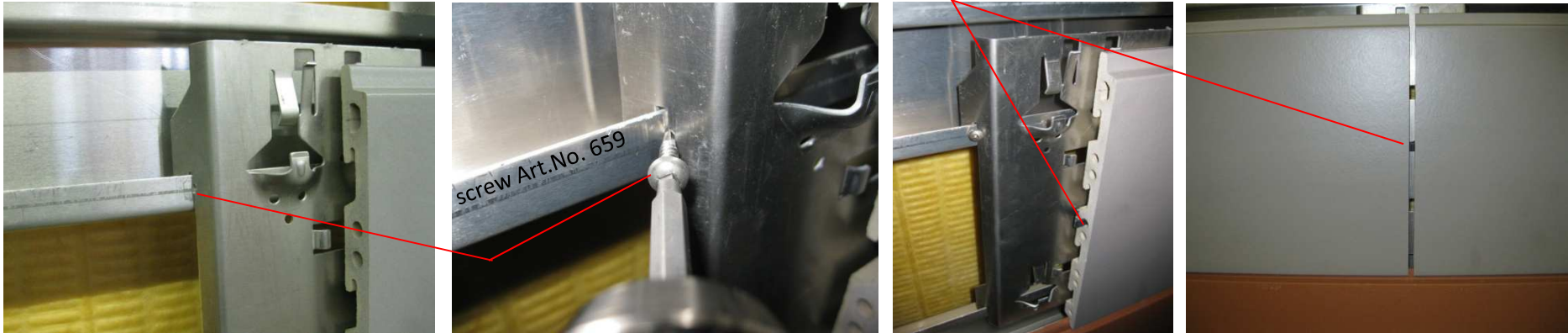
- The profiles of the basic substructure have to be mounted perpendicularly and in a flush way
- Fix the horiz. rails Art. Nr. 597 onto the vert. basic substructure, by using approved fasteners.
- Exact distance between horiz. rails must be observed (module size).
- Hook the OmegaV pieces tightly into the horiz. rails.
- The horiz. distance between OmegaV pieces has to match the horiz. module size (length of the tiles +8mm).

K20 OmegaV hook into horiz. rails



Important: Locking for OmegaV piece left and tight with screws Art. No. 659

at open vert. joints the spacer Art. No. 645 must be observed



installation with joint profiles Art. No. 640 - no additional locking is necessary

