

MEWS

design Edward Barber & Jay Osgerby

colours

sizes

technical features

packing

MU
TIN
A[®]

MEWS / colours

chalk

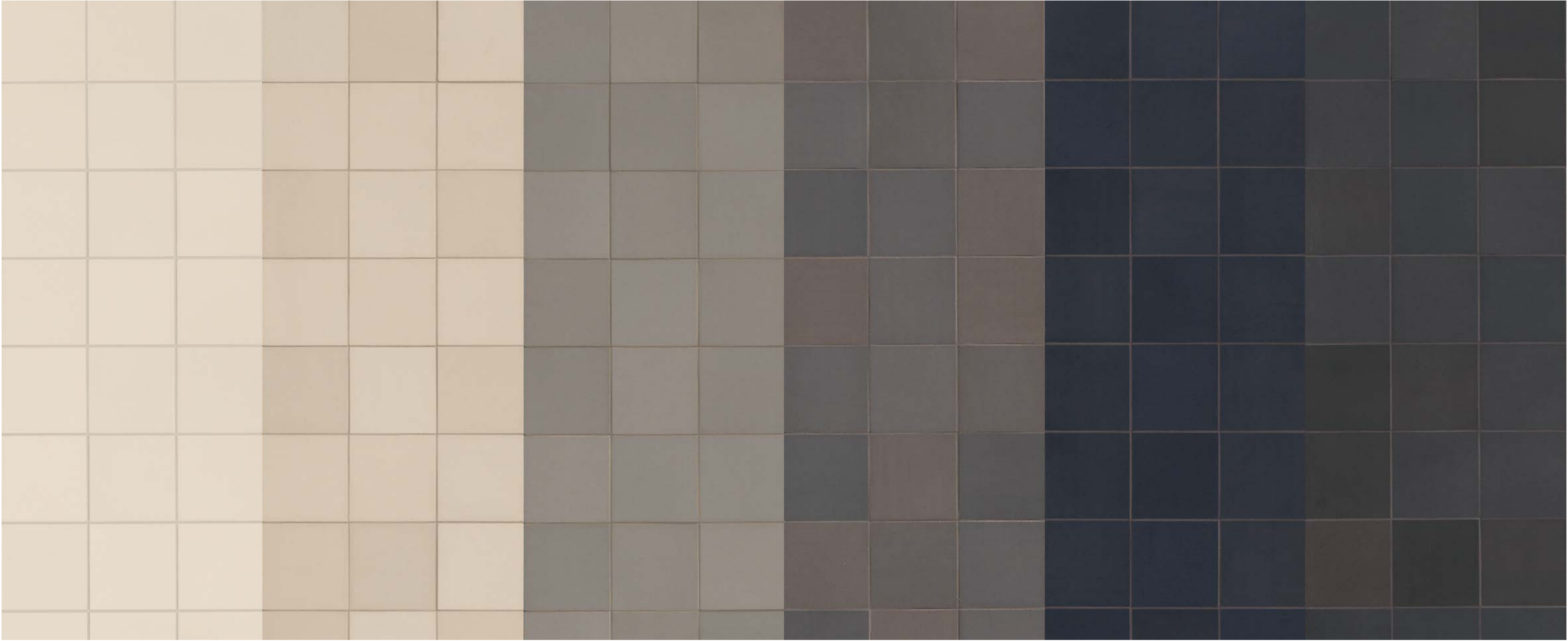
fog

pigeon

lead

ink

soot



MEWS

Modello depositato n° 002336909-0005/0012 – data di deposito: 31/10/2013 - Registered design n° 002336909-0005/0012 – date of registration: 31/10/2013

design Edward Barber and Jay Osgerby 2013

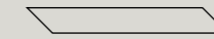
production industrial

material gres porcellanato smaltato ad impasto omogeneo - glazed homogeneous porcelain stoneware

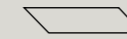
features pezzi tagliati ognuno esattamente uguale all'altro - cut pieces each one exactly the same as the others

thickness 10 mm

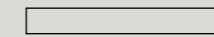
*misure nominali - nominal sizes



5,5-39,4 chevron
* 2¹/₅"·15¹/₂"



5,5-19,6 chevron
* 2¹/₅"·7³/₄"

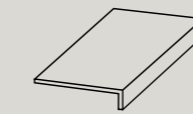


5,5-45
* 2¹/₅"·18"

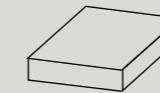


11-11
* 4¹/₃"·4¹/₃"

complementary pieces



33-45-4,5
* 13"¹/₂"·18"¹/₄"
gradone - step



33-33-4,5
* 13"¹/₂"·13"¹/₄"
angolare - corner tile



3,8-45
* 1¹/₂"·18"
battiscopa - skirting

MEWS / technical features

Bla GROUP

norma standard	caratteristiche features	valore prescritto value required	MEWS
ISO 10545/2	DIMENSIONI - SIZES lunghezza e larghezza - length and width spessore - thickness rettilinearità degli spigoli - straightness of edges ortogonalità - wedging planarità - flatness	± 0,6% ± 5% ± 0,5% ± 0,6% ± 0,5%	conforme in conformity with standard
ISO 10545/3	assorbimento d'acqua water absorption	<0,5%	0,04%
ASTM C373		<0,5%	0,04%
EN 101	durezza superficiale (scala mohs) surface hardness (scala mohs)	> 5	7
ISO 10545/9	resistenza agli sbalzi termici resistance to thermal shock	nessuna alterazione visibile no visible alteration	resiste resistant
ASTM C484		no samples must show visible defects	unaffected
ISO 10545/12	resistenza al gelo frost resistance	nessuna alterazione visibile no visible alteration	resiste resistant
ASTM C1026		unaffected	unaffected
ISO 10545/13	resistenza agli attacchi chimici resistance to chemical attacks	nessuna alterazione visibile no visible alteration	resiste resistant
ASTM C650			unaffected
BCRA	scivolosità antislip	> 0,40	dry 0,6 wet 0,42
DIN 51130 - 04		valori medi 6° ÷ 10° 10° ÷ 19° 19° ÷ 27° 27° ÷ 35° > 35°	R9 R10 R11 R12 R13
ASTM C1028		> 0,60	dry 0,75 wet 0,75

MEWS / packing

formato size	pz-mq pcs-sqm	pz-scat. pcs-box	mq-scat. sqm-box	scat.·pal. box-pal.	kg-scat. kg-box	kg-pal. kg-pal.	mq-pal sqms-pal
5,5-39,4 chevron	46,15	36	0,78	40	17,55	702	31,20
5,5-19,6 chevron	92,76	72	0,78	40	17,40	696	31,20
5,5-45	40,40	36	0,89	40	20,20	808	35,60
11-11	82,64	60	0,73	48	16,70	802	35,04
gradone 33-45-4,5	-	2	0,9 ml	-	8,00	-	-
angolare 33-33-4,5	-	1	0,33 ml	-	6,10	-	-
battiscopa 3,8-45	-	10	4,5 ml	-	3,65	-	-



V4
variazione forte
dramatic variation

MUTINA.IT

Follow us on

