

DÉCHIRER

design Patricia Urquiola

colours

sizes

technical features

packing

MU
TIN
A[®]

DÉCHIRER / textures and colours - decor/neutral

decor bianco neutral bianco decor grigio neutral grigio decor piombo neutral piombo decor nero neutral nero decor ecrù neutral ecrù



DÉCHIRER / déchirer textures and colours - glass

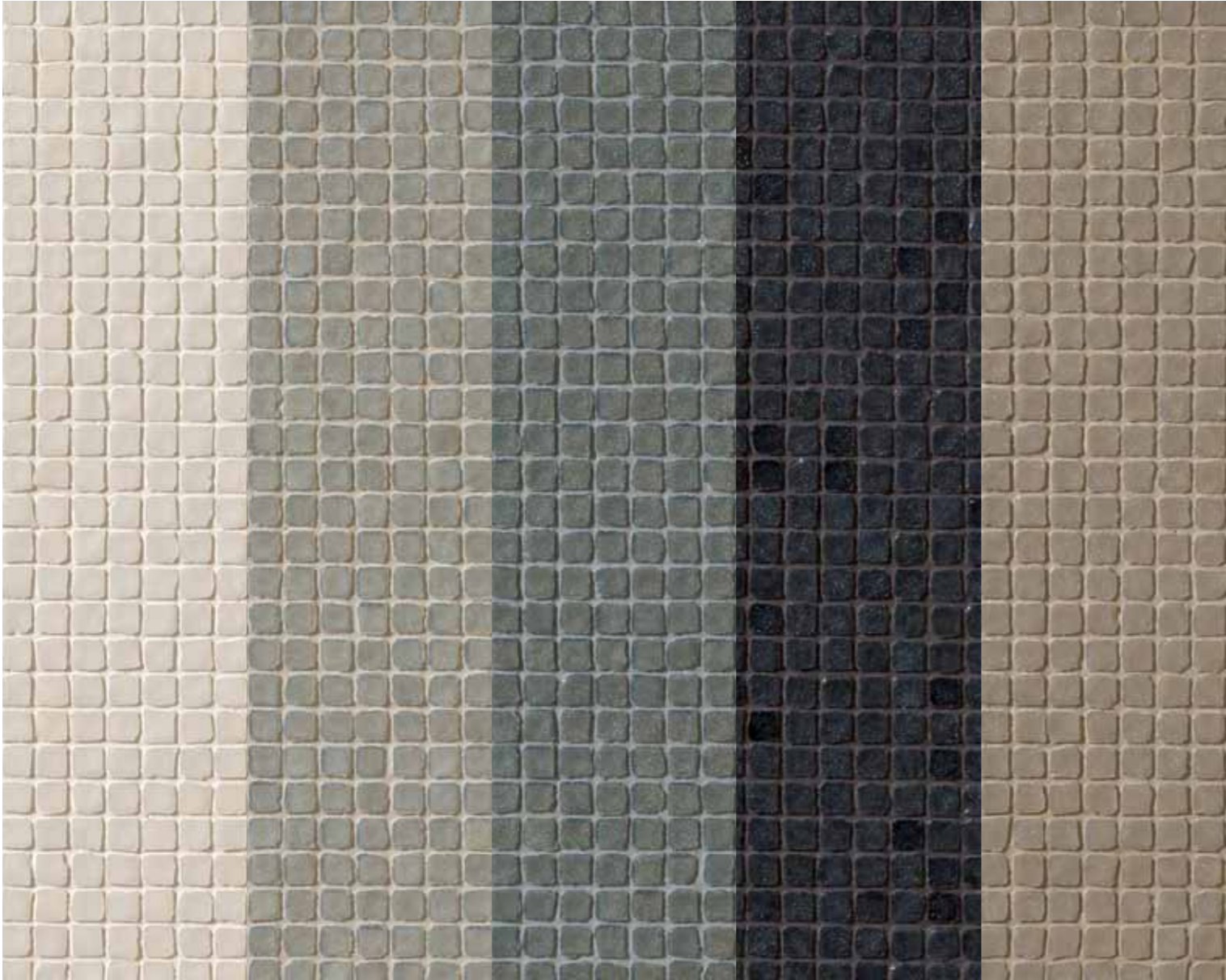
glass bianco

glass grigio

glass piombo

glass nero

glass ecru



DÉCHIRER (LA SUITE) / textures and colours - net/trace

net calce

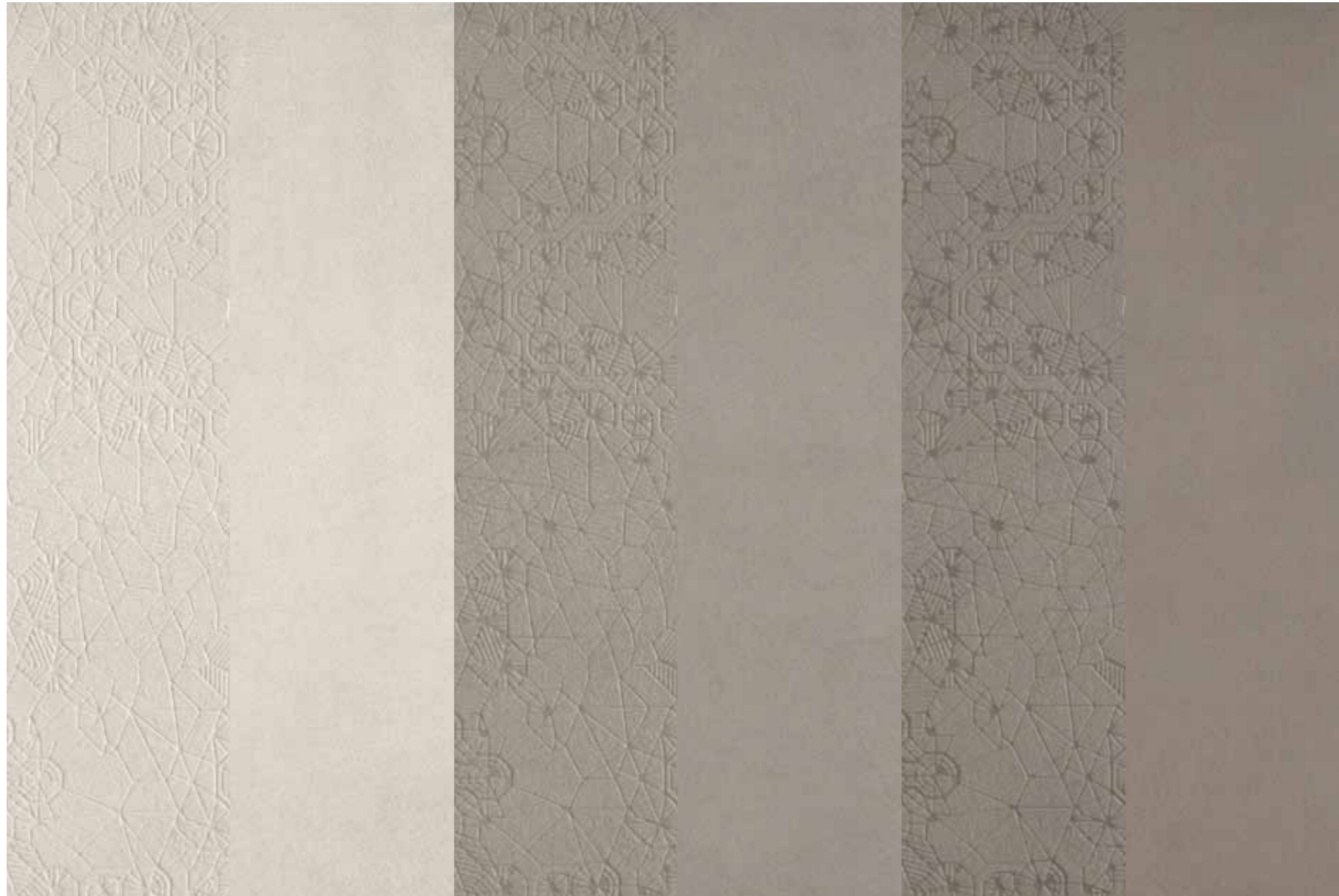
trace calce

net cemento

trace cemento

net cenere

trace cenere



DÉCHIRER DECOR - NEUTRAL / sizes

Modello depositato n° 001615790-001 – data di deposito: 25/09/2009 - Registered design n° 001615790-001 – date of registration: 25/09/2009

Modello depositato n° 001615774-001 – data di deposito: 25/09/2009 - Registered design n° 001615774-001 – date of registration: 25/09/2009

design Patricia Urquiola 2008

production industrial

material gres porcellanato non smaltato ad impasto omogeneo

unglazed homogeneous porcelain stoneware

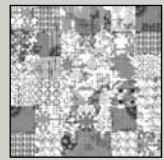
features lastre squadrate, rettificate e spazzolate ognuna esattamente

uguale all'altra - squared, rectified and brushed slabs each one exactly the same as the others

thickness 12mm

*misure nominali - nominal sizes

decor



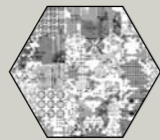
120-120
* 47"-47"



60-120
* 23 5/8"-47"



60-60
* 23 5/8"-23 5/8"



esagona 120-120
* 47"-47"



esagona 60-60
* 23 5/8"-23 5/8"



mosaico random decor
44,4-21,4 - *18"-9"

neutral



120-120
* 47"-47"

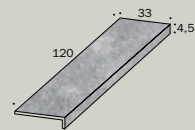


60-120
* 23 5/8"-47"

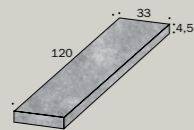


60-60
* 23 5/8"-23 5/8"

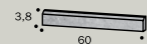
complementary pieces



33-120-4,5
* 13"-47"-1 7/8"
gradone - step



33-120-4,5
* 13"-47"-1 7/8"
angolare - corner tile



3,8-60
* 2"-23 5/8"
battiscopa - skirting

DÉCHIRER GLASS / sizes

design Patricia Urquiola 2009

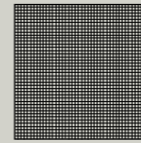
production artisanal

material mosaico vetroso riciclato - recycled glass mosaic

thickness 4,5mm

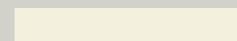
*misure nominali - nominal sizes

glass



0,9-0,9 su rete 30-30
* 11/32"-11/32" on net 12"-12"

stucchi - grouts



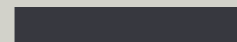
bianco 50



grigio 44



piombo 53



nero 06



ecrù 52

DÉCHIRER / technical features

Bla GROUP

norma standard	caratteristiche features	valore prescritto value required	déchirer
ISO 10545/3	assorbimento d'acqua water absorption	<0,5%	0,06%
ASTM C373		<0,5%	0,06%
EN 101	durezza superficiale (scala mohs) surface hardness (scala mohs)	> 5	8
ISO 10545/9	resistenza agli sbalzi termici resistance to thermal shock	nessuna alterazione visibile no visible alteration	resiste resistant
ASTM C484		no samples must show visible defects	unaffected
ISO 10545/12	resistenza al gelo frost resistance	nessuna alterazione visibile no visible alteration	resiste resistant
ASTM C1026		unaffected	unaffected
ISO 10545/13	resistenza agli attacchi chimici resistance to chemical attacks	nessuna alterazione visibil no visible alteration	resiste resistant
ASTM C650			unaffected
ISO 10545/4	resistenza alla flessione breaking strength	≥35 N/mm2	61,2 N/mm2
BCRA	scivolosità anti-slip	> 0,40	cuoio asciutto 0,69 dry leather gomma bagnata 0,76 wet rub gomma asciutta 0,75 dry rub
DIN 51130 - 04		valori medi 6° ÷ 10° 10° ÷ 19° 19° ÷ 27° 27° ÷ 35° > 35°	R9 R10 R11 R12 R13 déchirer neutral R10 déchirer decor R10
ASTM C1028		> 0,60	dry neutral 0,76 decor 0,76 wet neutral 0,69 decor 0,69

LEED CERTIFICATION 4.1 20% recycled material

sistema produttivo con certificazione ambientale ISO 14000 e ISO 9001
environmental management system ISO 14000 e ISO 9001

DÉCHIRER GLASS / technical features

norma standard	caratteristiche features	glass
ISO 10545/3	assorbimento d'acqua water absorption	nullo none
ISO 10545/9	resistenza agli sbalzi termici resistance to thermal shock	resiste resistant
ISO 10545/12	resistenza al gelo frost resistance	resiste resistant
DIN 51094	resistenza dei colori alla luce colours resistance to fading	resiste resistant
ISO 10545/13	resistenza agli attacchi chimici resistance to chemical attacks	resiste resistant



V1
variazione uniforme
uniform variation

DÉCHIRER (LA SUITE) NET - TRACE / sizes

Modello depositato n° 001913062-0005 – data di deposito: 06/09/2011 - Registered design n° 001913062-0005 – date of registration: 06/09/2011

Modello depositato n° 001912999-0014 – data di deposito: 06/09/2011 - Registered design n° 001912999-0014 – date of registration: 06/09/2011

design Patricia Urquiola 2010

production industrial

material gres porcellanato non smaltato ad impasto omogeneo

unglazed homogeneous porcelain stoneware

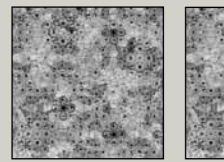
features lastre squadrate, retificate e spazzolate ognuna esattamente

uguale all'altra - squared, rectified and brushed slabs each one exactly the same as the others

thickness 12mm

*misure nominali - nominal sizes

net



120-120
* 47"-47"

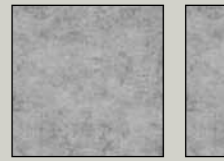


30-120
* 12"-47"



60-60
*23 5/8"-23 5/8"

trace



120-120
* 47"-47"

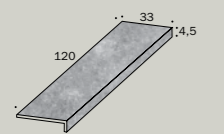


30-120
* 12"-47"

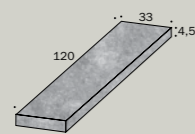


60-60
*23 5/8"-23 5/8"

complementary pieces



33-120-4,5
* 13"-47"-1 7/8"
gradone - step



33-120-4,5
* 13"-47"-1 7/8"
angolare - corner tile



3,8-60
*2"-23 5/8"
battiscopa - skirting

stucchi - grouts



DÉCHIRER (LA SUITE) / technical features

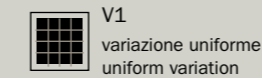
Bla GROUP

norma standard	caratteristiche features	valore prescritto value required	déchirer (la suite)
ISO 10545/3	assorbimento d'acqua water absorption	<0,5%	0,06%
ASTM C373		<0,5%	0,06%
EN 101	durezza superficiale (scala mohs) surface hardness (scala mohs)	> 5	8
ISO 10545/9	resistenza agli sbalzi termici resistance to thermal shock	nessuna alterazione visibile no visible alteration	resiste resistant
ASTM C484		no samples must show visible defects	unaffected
ISO 10545/12	resistenza al gelo frost resistance	nessuna alterazione visibile no visible alteration	resiste resistant
ASTM C1026		unaffected	unaffected
ISO 10545/13	resistenza agli attacchi chimici resistance to chemical attacks	nessuna alterazione visibile no visible alteration	resiste resistant
ASTM C650			unaffected
ISO 10545/4	resistenza alla flessione breaking strength	≥35 N/mm2	61,2 N/mm2
DIN 51130 - 04		valori medi 6° ÷ 10° 10° ÷ 19° 19° ÷ 27° 27° ÷ 35° > 35°	R9 R10 R11 R12 R13 net trace R11
ASTM C1028/07		> 0,60	dry trace 0,82 wet trace 0,74 net 0,76 net 0,69
ISO 10545/14	resistenza alle macchie stains resistance	≥ classe 3	5

LEED CERTIFICATION 4.1 20% recycled material

sistema produttivo con certificazione ambientale ISO 14000 e ISO 9001

environmental management system ISO 14000 e ISO 9001



DÉCHIRER / packing

formato size	pz-mq pcs-sqm	mq-pz sqm-pcs	pz-pal. pcs-pal	kg-pz kg-pcs	kg-pal. kg-pal.	mq-pal sqms-pal
120-120	0,69	1,44	36	38,30	1379	51,84

	pz-mq pcs-sqm	pz-scat. pcs-box	mq-scat. sqm-box	scat.-pal. box-pal.	kg-scat. kg-box	kg-pal. kg-pal.	mq-pal sqms-pal
esagona 120-120	1,07	1	0,93	36	25,10	904	33,48
60-120	1,38	2	1,44	24	38,65	928	34,56
30-120	2,78	2	0,72	48	19,10	917	34,56
60-60	2,77	3	1,08	32	29,00	928	34,56
esagona 60-60	4,30	4	0,92	24	25,15	607	22,08
mosaico random decor 21,4-44,4	10,52	5	0,47	56	12,50	700	26,60
gradone 33-120-4,5	-	2	2,4 ml	-	26,00	-	-
angolare 33-120-4,5	-	1	1,2 ml	-	13,00	-	-
battiscopa 3,8-60	-	10	6 ml	-	5,85	-	-
déchirer glass 30-30	11	11	1,00	60	6,05	363	60,00

MUTINA.IT

Follow us on

