

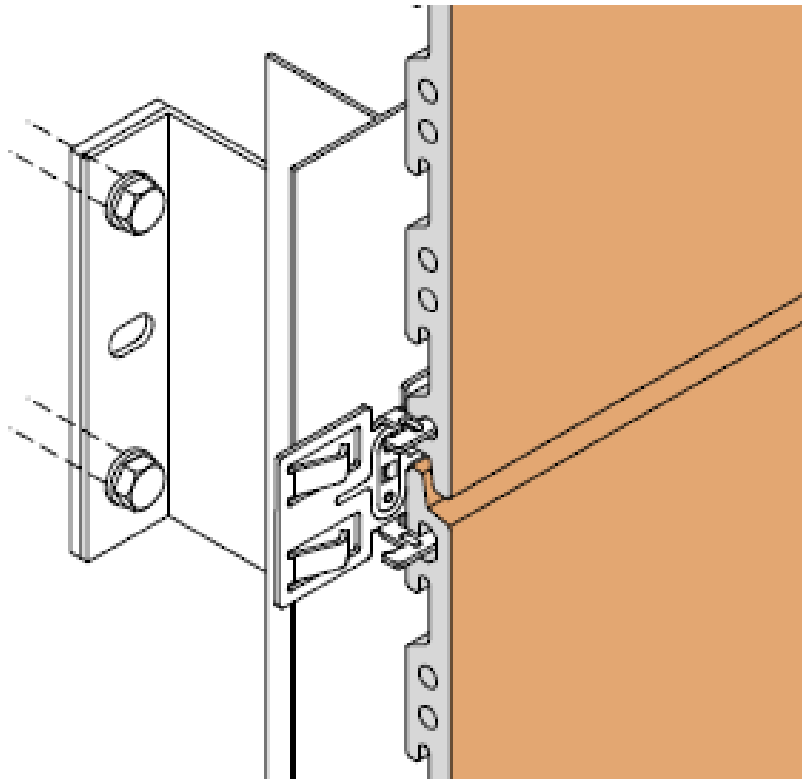
K20 with aluminium clamps on vert. profiles

Substructure

The mounting of the basic substructure must be carried out according to project-specific, static calculation.

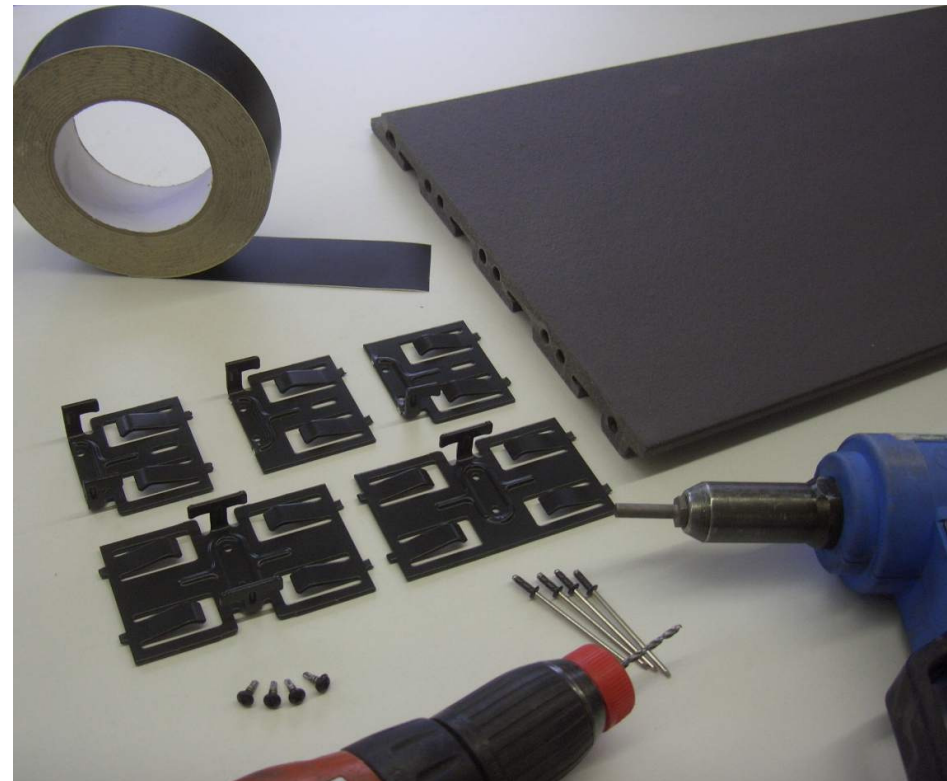
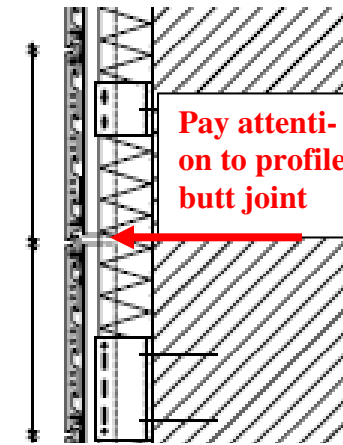
- The profiles have to be mounted perpendicularly and in a flush way.
- The distance of the rails in horizontal direction must correspond to the longitudinal grid of the panels.
- The length of the vertical profiles must be divisible by the height of the panel format and should not exceed the height of a storey of the building.

Vertical rows are mounted.

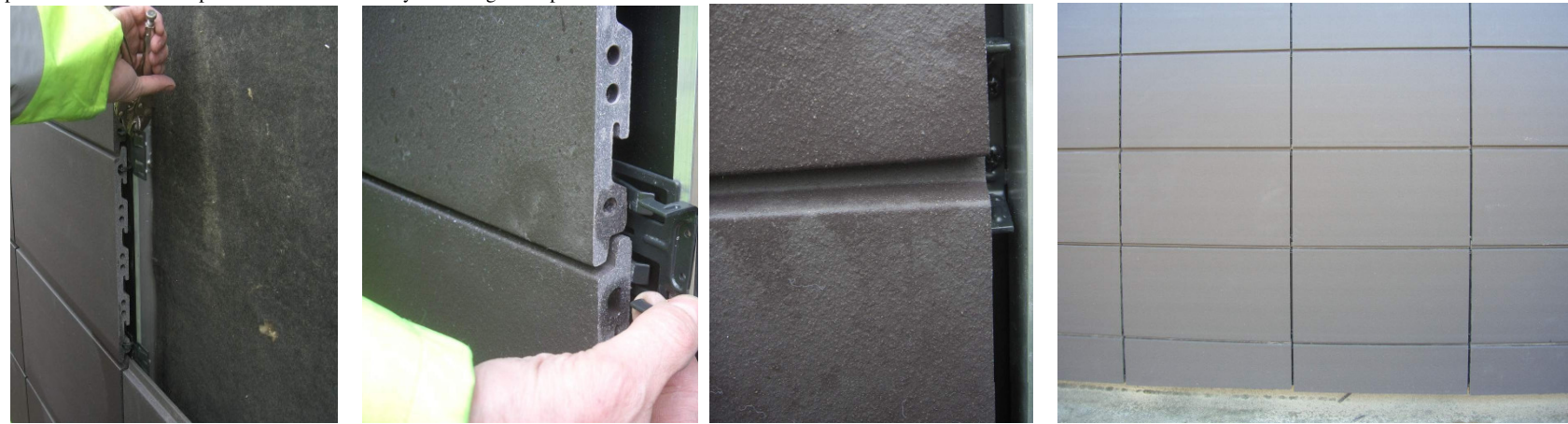
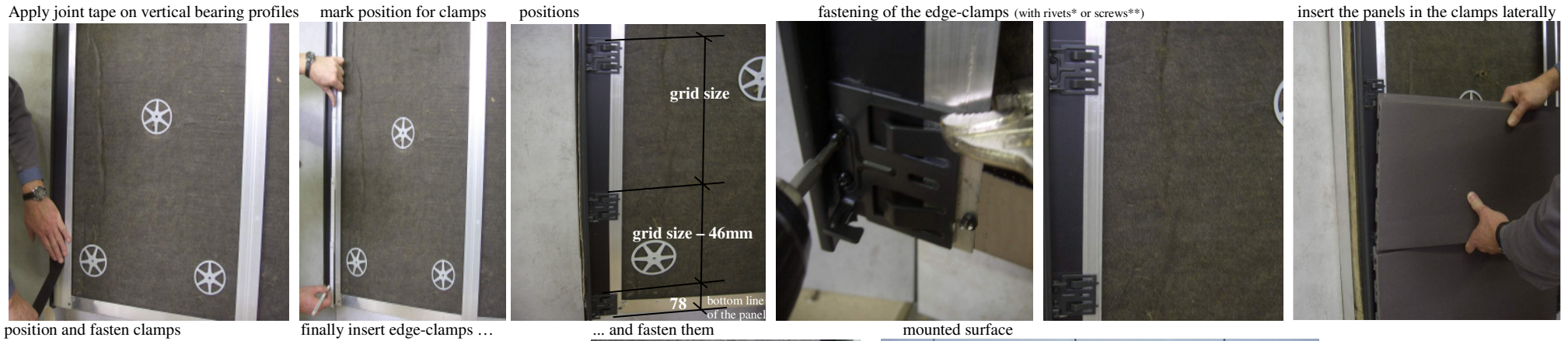


Important:

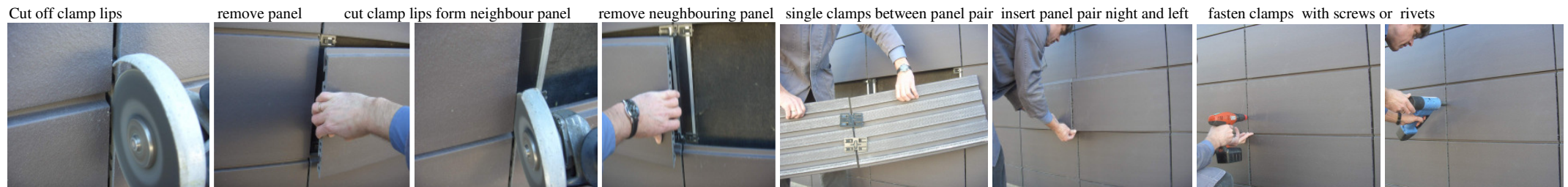
A profile butt joint of the vertical bearing profiles behind a panel is not allowed!
See standard technical detail drawings.



K20 with aluminium clamps on vert. profiles



Replacement of a panel



Further information, see the standard technical details of the system K20 which we will make available to you on request.

*stainless steel rivet, black $\phi 3,2 \times 9,5$ mm with extended bolt (Art. No. 675)

**A2 stainless steel screw, black (Art. No. 676)

Please use tools with extended (25mm) mouth die!